

LIBERCOURT

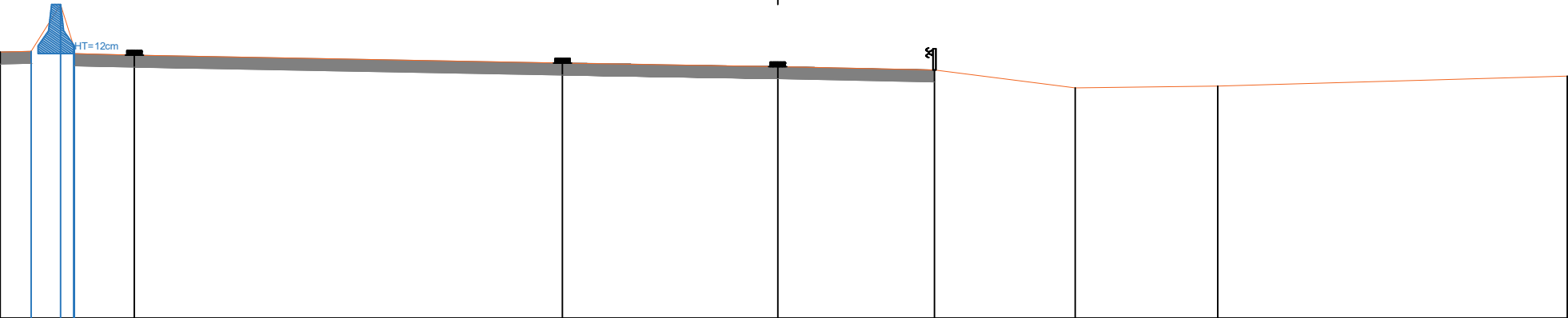
Autoroute A1

Sens Paris -> Lille

Profil P271

indice: 1

Sens Paris -> Lille



Echelle des longueurs : 1/100  
Echelle des altitudes : 1/100

PC : 19.00 m

Altitudes TN	23.40	23.41	24.19	23.37	23.35	23.22	23.16	23.11	22.81	22.84	23.00
Distances à l'axe TN	-12.864	-12.354	-11.865	-11.640	-10.647	-3.562	0.000	2.593	4.920	7.281	13.063
Distances partielles TN	0.510	0.489	0.225	0.993	7.085	3.562	2.593	2.327	2.361	5.782	